

# Kategorie:Patologie

## Subcategories

This category has the following 3 subcategories, out of 3 total.

### H

- ▶ Histopatologické preparáty (1 C, 1 P, 548 F)

### P

- ▶ Patologická schémata (44 F)
- ▶ Patologické preparáty (1. LF UK) (83 P, 215 F)

## Pages in category "Patologie"

The following 200 pages are in this category, out of 896 total.

(previous page) (next page)

### A

- Abraze (stomatologie)
- Absces
- Absces plic
- Achalázie
- Achondroplázie
- Actinomyces israeli
- Adaptace tkání a orgánů
- Addisonova choroba
- Adenoameloblastom
- Adenom
- Adnexitida
- Aftózní stomatitida
- Akantóza
- Aktinomykóza
- Akutní autoimunitní trombocytopenická purpura
- Akutní bronchitida
- Akutní faryngitida
- Akutní lymfoblastická leukemie
- Akutní lymfoblastická leukémie
- Akutní myeloidní leukemie
- Akutní nekróza pankreatu
- Akutní pankreatitida (laboratorní diagnostika)
- Akutní subdurální hematom
- Akutní zánět
- Albinismus
- Alergická onemocnění dýchacího ústrojí
- Alergická profesionální onemocnění dýchacích cest a plic
- Alergie
- Alportův syndrom
- Alveolitis purulenta
- Alzheimerova choroba
- Ameloblastický fibrom
- Ameloblastom
- Amyloidóza
- Amyloidóza ledvin
- Amyloidóza/PGS
- Anafylaxe
- Aneurysma
- Angina pectoris
- Angiofibrom nosohltanu
- Aniridie
- Aničkovy buňky
- Ankylozující spondylartritida
- Anorganické látky v budovách
- Antrakóza
- Antrax
- Anémie

- Anémie
- Anémie chronických chorob
- Aortální stenóza
- Apoptóza
- Arachnoidální cysty
- Arterioskleróza
- Arteriální hypertenze
- Arthritis uratica
- Arthrogryposis multiplex congenita
- Arytmogenní kardiomyopatie
- Aschoffovy buňky
- Ascites
- Asfyxie
- Astma
- Astrocytom
- Atelektáza
- Ateroskleróza
- Atopický ekzém
- Atrice
- Atrofie
- Atrézie jícnu
- Atypické pneumonie
- Autoimunitní onemocnění
- Autoimunitní pankreatitida
- Avaskulární kostní nekróza
- Azbest
- Azbestóza
- Azotemie

## B

- Bakteriální endokarditis (preparát)
- Bakteriémie
- Balzerova nekróza
- Bannayan-Riley-Ruvalcabaův syndrom
- Barrettův jícen
- Bartterův syndrom
- Barvení hematoxylin-eosin
- Bazaliom
- Bazaliom/PGS
- Bence-Jonesova bílkovina
- Benigní
- Benigní hyperplazie prostaty
- Benigní nádory ledvin
- Benigní nádory slinných žláz
- Benigní onemocnění prsu
- Biologické vlastnosti nádorů
- Biologie nádorového růstu
- Biopsie
- Blackfanova-Diamondova anémie
- Boerhaaveův syndrom
- Botulismus
- Bowenova nemoc
- BRCA
- Brennerův tumor
- Bronchiektázie
- Bronchiolitida
- Bronchogenní karcinom
- Bronchogenní karcinom/PGS
- Brucelóza
- Brutonova agamaglobulinemie
- Buddův-Chiariho syndrom
- Burkittův lymfom
- Buňka
- Bércový vřed
- Bílkoviny v séru a moči (1. LF UK, VL)

## C

- Candidosis
- Castlemanova choroba
- Cementom
- Charcotův-Marieův-Toothův syndrom
- Charvátův příznak
- Cherubismus

- Chlopenni vady
- Choledocholitíáza
- Cholelitiáza
- Cholesteatom
- Chondrom
- Chondrosarkom
- Choroby nehtů
- Chronická (autoimunitní) tyreoiditida
- Chronická bronchitida
- Chronická cholecystitida
- Chronická lymfatická leukemie
- Chronická myeloidní leukemie
- Chronická onemocnění plic
- Chronická pankreatitida
- Chronické leukemie (rozcestník)
- Chronický subdurální hematom
- Chronický zánět
- Chřipka
- Cirkulační kolaps
- Cirkulující nádorové buňky
- Cor pulmonale
- Cowdenové syndrom
- Crohnova choroba
- Crohnova choroba/etiopatogeneze
- Cronkhite-Canada syndrom
- Cushingův syndrom
- Cysta choledochu
- Cystická fibróza
- Cystická medionekróza
- Cysty
- Cytopatologie
- Céliakie

## D

- Decubitus
- Defekt septa komor
- Defekt septa síní
- Degenerativní onemocnění krční páteře
- Dehydratace (pediatrie)
- Uživatel:DenKazeka/Pískoviště Crohn
- Depistáž
- Dermatitis contacta allergica
- Dermatitis herpetiformis
- Dermatitis perioralis
- Dermatitis seborrhoica
- Dermatofytózy
- Deterministické účinky ionizujícího záření
- Dextrokardie
- Diabetes mellitus
- Diabetes mellitus 1. typu (endokrinologie)
- Diabetická noha
- Dialyzační amyloidóza
- Diastrofický dwarfismus
- Diferenciální diagnostika ikteru
- Diftérie
- Dilatační kardiomyopatie
- Disekce hrudní aorty
- Diseminovaná intravaskulární koagulace
- Distribuční šok
- Divertikly jícnu
- Divertikulární nemoc tlustého střeva
- Druhy kloubních poranění a zásady léčení
- Dunbarův syndrom
- Dysmenorrhoea
- Dysplázia
- Dystrofie
- Dysurie
- Dědičné metabolické poruchy komplexních molekul
- Dětská struma
- Důsledky portální hypertenze

## E

- Edém mozku

- Ehrlichioza
- Ekchymóza
- Embolie
- Embolus
- Emfyzém
- Encefalitida
- Encefalopatie
- Enchondromatóza
- Endokarditida
- Endokrinní onemocnění gonád
- Endometrióza
- Eosinofilní angiocentrická fibróza
- Eozinofilie
- Eozinopenie
- Ependymom (patologie)
- Epidermolysis bullosa congenita

(previous page) (next page)

## Media in category "Patologie"

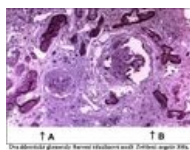
The following 149 files are in this category, out of 149 total.



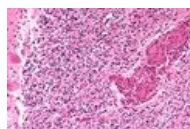
Actinomyces isra...  
2,272 × 1,704; 787 KB



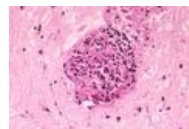
AdenokarzinomL...  
110 × 60; 10 KB



Alportův syndro...  
352 × 282; 76 KB



Angiitis cns A72-...  
533 × 352; 110 KB



Angiitis cns A72-...  
533 × 361; 56 KB



Angiolipoma.jpg  
1,726 × 1,149; 737 KB



Apirated korn ker...  
444 × 640; 209 KB



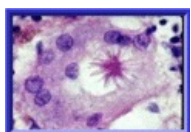
Aspiration 1.jpg  
331 × 500; 139 KB



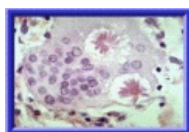
Aspiration 2.jpg  
465 × 640; 167 KB



Aspiration pneu...  
451 × 640; 316 KB



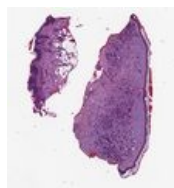
Asteroidní tělísko...  
211 × 142; 12 KB



Asteroidní tělísko...  
215 × 146; 12 KB



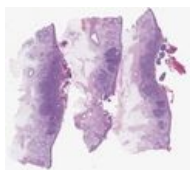
Basalzellkarzino...  
480 × 924; 131 KB



Basalzellkarzino...  
360 × 391; 45 KB



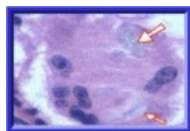
Basalzellkarzino...  
390 × 1,084; 134 KB



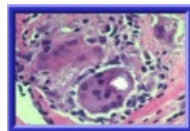
Basalzellkarzino...  
1,799 × 1,600;  
1.08 MB



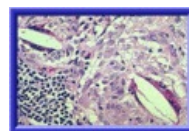
BCC superfiziell 3...  
240 × 669; 28 KB



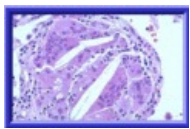
Calcium-oxalátov...  
213 × 147; 11 KB



Calcium-oxalátov...  
214 × 150; 14 KB



Cholesterolový kr...  
214 × 144; 16 KB



Cholesterolový kr...  
212 × 140; 11 KB



Crohn1.jpg  
300 × 250; 83 KB



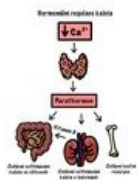
Crohn2.jpg  
300 × 254; 73 KB



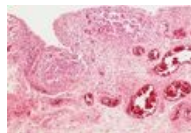
Disekce ascende...  
1,046 × 977; 212 KB



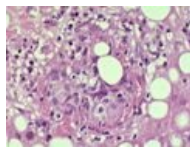
Disekce descend...  
1,017 × 766; 193 KB



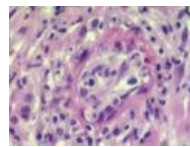
Down regulace C...  
1,668 × 2,154; 347 KB



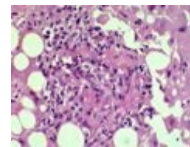
Extrapulmonální ...  
533 × 370; 92 KB



Fibrin ring granul...  
533 × 403; 83 KB



Fibrin ring granul...  
533 × 400; 64 KB



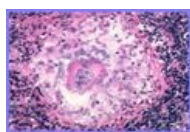
Fibrin ring granul...  
533 × 407; 77 KB

| Stadium | 1 | 2 | 3 | 4 | 5 | 6 | 7 | 8 | 9 | 10 | 11 | 12 | 13 | 14 | 15 | 16 | 17 | 18 | 19 | 20 | 21 | 22 | 23 | 24 | 25 | 26 | 27 | 28 | 29 | 30 | 31 | 32 | 33 | 34 | 35 | 36 | 37 | 38 | 39 | 40 | 41 | 42 | 43 | 44 | 45 | 46 | 47 | 48 | 49 | 50 | 51 | 52 | 53 | 54 | 55 | 56 | 57 | 58 | 59 | 60 | 61 | 62 | 63 | 64 | 65 | 66 | 67 | 68 | 69 | 70 | 71 | 72 | 73 | 74 | 75 | 76 | 77 | 78 | 79 | 80 | 81 | 82 | 83 | 84 | 85 | 86 | 87 | 88 | 89 | 90 | 91 | 92 | 93 | 94 | 95 | 96 | 97 | 98 | 99 | 100 |
|---------|---|---|---|---|---|---|---|---|---|----|----|----|----|----|----|----|----|----|----|----|----|----|----|----|----|----|----|----|----|----|----|----|----|----|----|----|----|----|----|----|----|----|----|----|----|----|----|----|----|----|----|----|----|----|----|----|----|----|----|----|----|----|----|----|----|----|----|----|----|----|----|----|----|----|----|----|----|----|----|----|----|----|----|----|----|----|----|----|----|----|----|----|----|----|----|----|----|----|----|-----|
| Stadium | 1 | 2 | 3 | 4 | 5 | 6 | 7 | 8 | 9 | 10 | 11 | 12 | 13 | 14 | 15 | 16 | 17 | 18 | 19 | 20 | 21 | 22 | 23 | 24 | 25 | 26 | 27 | 28 | 29 | 30 | 31 | 32 | 33 | 34 | 35 | 36 | 37 | 38 | 39 | 40 | 41 | 42 | 43 | 44 | 45 | 46 | 47 | 48 | 49 | 50 | 51 | 52 | 53 | 54 | 55 | 56 | 57 | 58 | 59 | 60 | 61 | 62 | 63 | 64 | 65 | 66 | 67 | 68 | 69 | 70 | 71 | 72 | 73 | 74 | 75 | 76 | 77 | 78 | 79 | 80 | 81 | 82 | 83 | 84 | 85 | 86 | 87 | 88 | 89 | 90 | 91 | 92 | 93 | 94 | 95 | 96 | 97 | 98 | 99 | 100 |

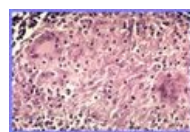
GIST staging.pdf  
1,239 × 1,754; 88 KB



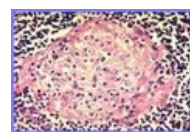
Granulom.jpg  
615 × 464; 62 KB



Granuloma non-n...  
310 × 210; 28 KB



Granuloma non-n...  
310 × 210; 31 KB



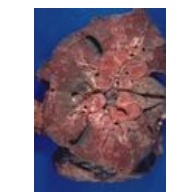
Granuloma non-n...  
310 × 210; 35 KB



Gross sarcoid bhl...  
500 × 333; 46 KB



Gross sarcoid bhl...  
600 × 397; 74 KB



Gross sarcoid bhl...  
424 × 600; 67 KB



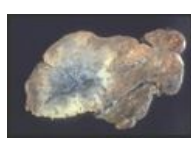
Gross sarcoid ho...  
500 × 333; 48 KB



Gross sarcoid ho...  
768 × 512; 98 KB



Gross sarcoid LN...  
600 × 446; 47 KB



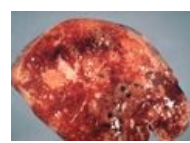
Gross sarcoid no...  
500 × 333; 29 KB



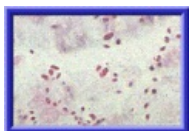
Gross sarcoid sca...  
500 × 333; 60 KB



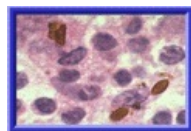
Gross sarcoid spl...  
600 × 428; 55 KB



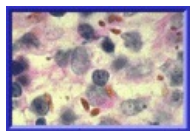
Gross sarcoid spl...  
600 × 420; 62 KB



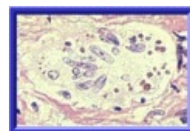
Hamazakiho-Wes...  
216 × 149; 11 KB



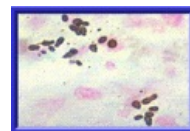
Hamazakiho-Wes...  
215 × 149; 12 KB



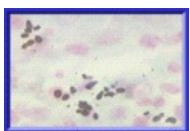
Hamazakiho-Wes...  
212 × 144; 12 KB



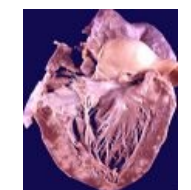
Hamazakiho-Wes...  
213 × 147; 12 KB



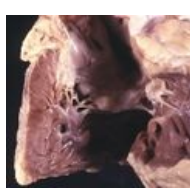
Hamazakiho-Wes...  
212 × 146; 10 KB



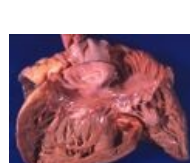
Hamazakiho-Wes...  
210 × 142; 7 KB



Heart-sarcoidosis...  
400 × 481; 47 KB



Hypertrofie PK 2.j...  
640 × 599; 129 KB



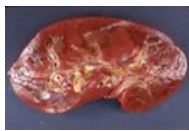
Hypertrofie PK.jpg  
500 × 369; 141 KB



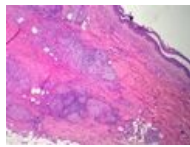




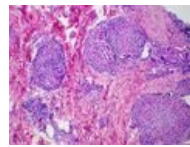
JCutanAesthetSur...  
743 × 558; 60 KB



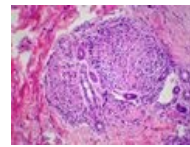
Kidneyamy.jpg  
768 × 512; 73 KB



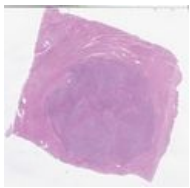
Kveim test 1.jpg  
533 × 400; 104 KB



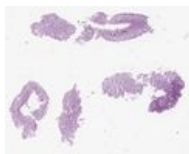
Kveim test 2.JPG  
533 × 400; 111 KB



Kveim test 3.JPG  
533 × 400; 82 KB



Leiomyom 10 28...  
1,440 × 1,418; 710 KB



LG tubulární ade...  
747 × 599; 63 KB



Lymf odtok prsu.j...  
1,448 × 1,236; 162 KB



Lymfom.PNG  
482 × 450; 476 KB



Mallory-Weiss sy...  
1,143 × 551; 186 KB



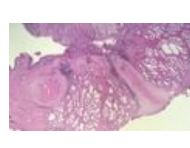
Meckelův diverti...  
3,264 × 2,448; 1.7 MB



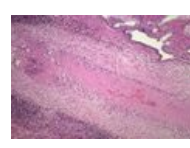
Meta játra.jpg  
400 × 320; 79 KB



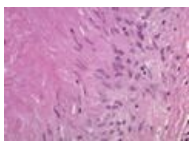
Myoma.png  
1,736 × 1,345; 942 KB



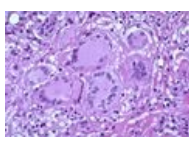
Necrobiotic post-...  
533 × 310; 62 KB



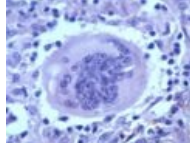
Necrobiotic post-...  
533 × 355; 87 KB



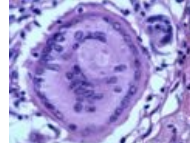
Necrobiotic post-...  
533 × 387; 45 KB



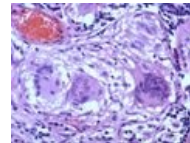
Obrovské mnoho...  
533 × 360; 72 KB



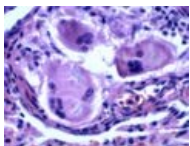
Obrovské mnoho...  
533 × 429; 54 KB



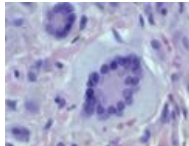
Obrovské mnoho...  
533 × 427; 57 KB



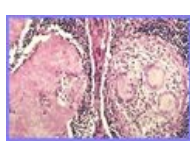
Obrovské mnoho...  
533 × 404; 71 KB



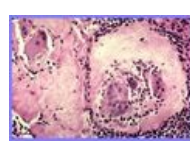
Obrovské mnoho...  
533 × 411; 56 KB



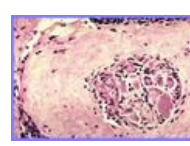
Obrovské mnoho...  
533 × 438; 46 KB



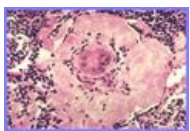
Osud granulomu ...  
310 × 210; 32 KB



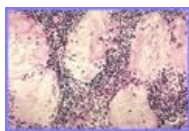
Osud granulomu ...  
310 × 210; 28 KB



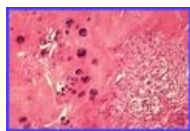
Osud granulomu ...  
310 × 210; 27 KB



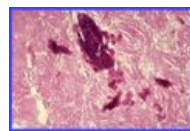
Osud granulomu ...  
310 × 210; 28 KB



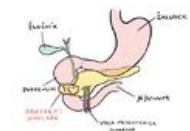
Osud granulomu ...  
310 × 210; 28 KB



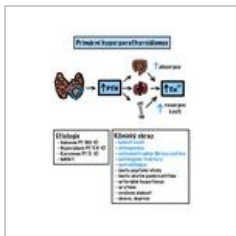
Osud granulomu ...  
310 × 210; 25 KB



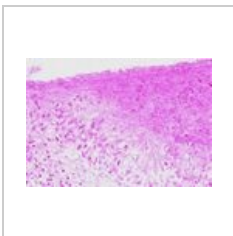
Osud granulomu ...  
310 × 210; 25 KB



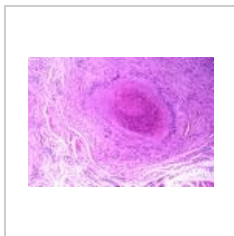
Pancreas-anulare...  
3,086 × 2,182; 415 KB



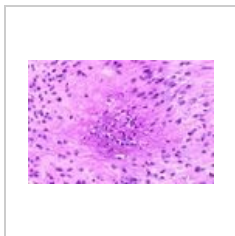
Primární hyperpa...  
1,668 × 2,154; 467 KB



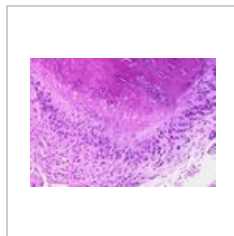
Rheumatoid nod ...  
533 × 367; 53 KB



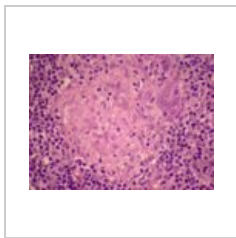
Rheumatoid nod ...  
533 × 371; 93 KB



Rheumatoid nod ...  
533 × 357; 60 KB



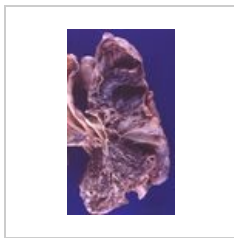
Rheumatoid nod ...  
533 × 370; 69 KB



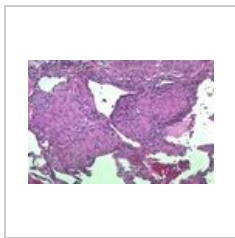
Sarcoid -LN2 SP0...  
533 × 392; 60 KB



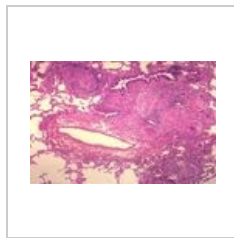
Sarcoid gross liv...  
533 × 423; 18 KB



Sarcoid gross lun...  
400 × 683; 62 KB



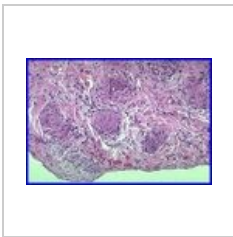
Sarcoid lunginv1...  
600 × 401; 84 KB



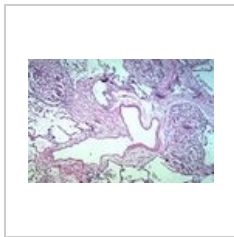
Sarcoid lunginv1...  
600 × 396; 97 KB



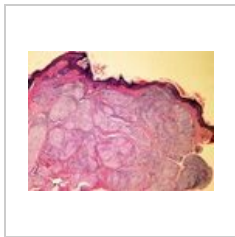
Sarcoid lunginv2...  
600 × 394; 116 KB



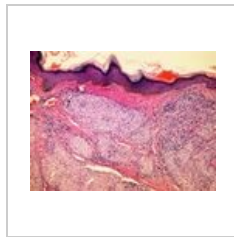
Sarcoid lunginv6...  
262 × 178; 24 KB



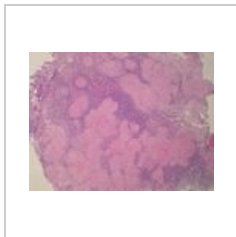
Sarcoid lunginv7...  
600 × 399; 126 KB



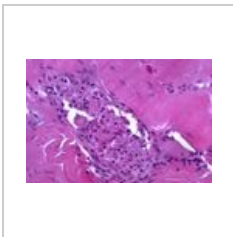
Sarcoid skin S75-...  
608 × 456; 182 KB



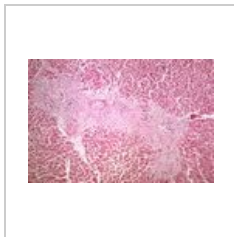
Sarcoid skin S75-...  
608 × 456; 179 KB



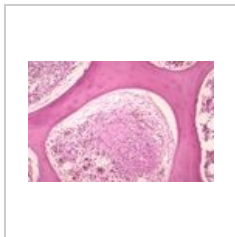
Sarcoid-LN SP03-...  
533 × 400; 68 KB



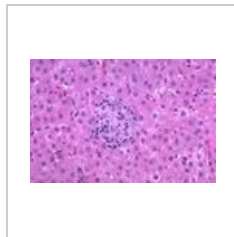
Sarcoidosis extra...  
600 × 400; 57 KB



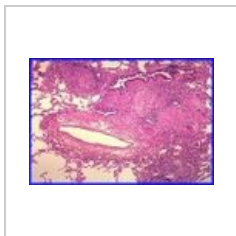
Sarcoidosis extra...  
600 × 401; 114 KB



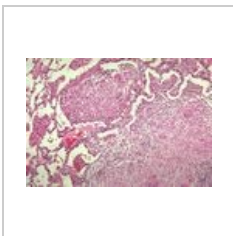
Sarcoidosis extra...  
600 × 392; 80 KB



Sarcoidosis extra...  
600 × 398; 65 KB



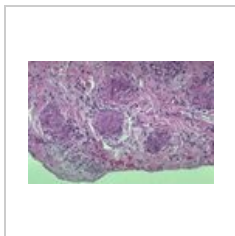
Sarkoidóza - hist...  
262 × 178; 24 KB



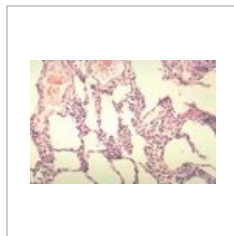
Sarkoidóza - hist...  
600 × 414; 125 KB



Sarkoidóza - hist...  
600 × 398; 106 KB



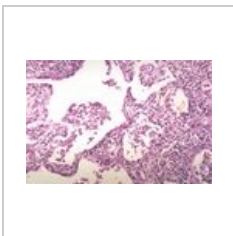
Sarkoidóza - hist...  
600 × 393; 87 KB



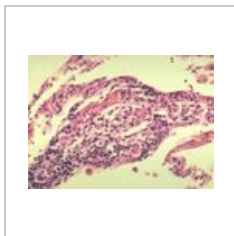
Sarkoidóza - výv...  
600 × 401; 72 KB



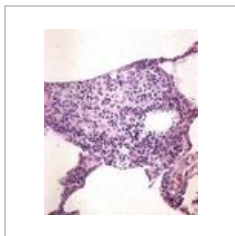
Sarkoidóza - výv...  
600 × 396; 75 KB



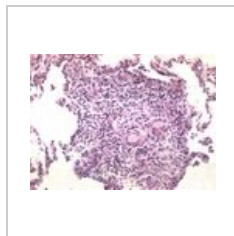
Sarkoidóza - výv...  
600 × 399; 91 KB



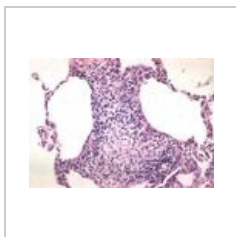
Sarkoidóza - výv...  
600 × 432; 67 KB



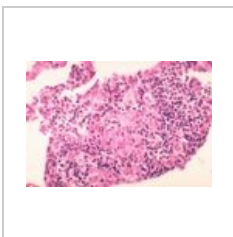
Sarkoidóza - výv...  
490 × 587; 97 KB



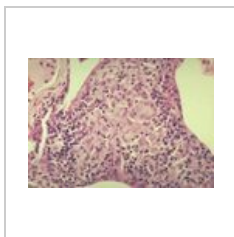
Sarkoidóza - výv...  
600 × 441; 88 KB



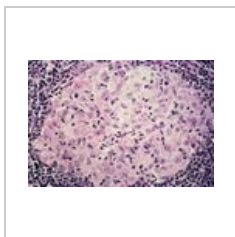
Sarkoidóza - výv...  
600 × 419; 83 KB



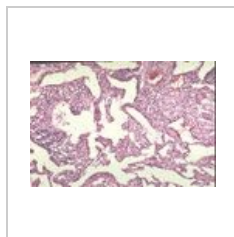
Sarkoidóza - výv...  
600 × 406; 62 KB



Sarkoidóza - výv...  
600 × 420; 75 KB

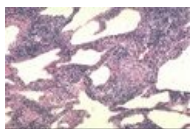


Sarkoidóza - výv...  
600 × 409; 87 KB

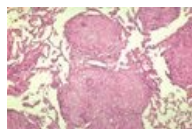


Sarkoidóza - výv...  
600 × 406; 125 KB

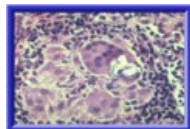




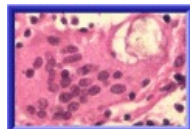
Sarkoidóza - výv...  
585 × 383; 107 KB



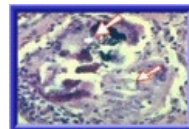
Sarkoidóza - výv...  
600 × 394; 99 KB



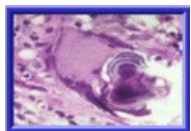
Schaumanovy in...  
214 × 148; 14 KB



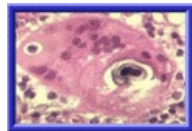
Schaumanovy in...  
212 × 146; 11 KB



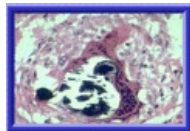
Schaumanovy in...  
214 × 146; 14 KB



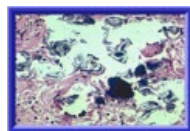
Schaumanovy in...  
214 × 148; 11 KB



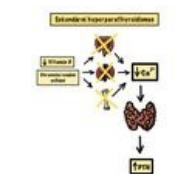
Schaumanovy in...  
214 × 150; 12 KB



Schaumanovy in...  
216 × 151; 14 KB



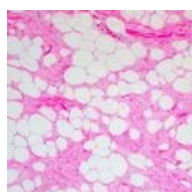
Schaumanovy in...  
215 × 146; 15 KB



Sekundární hype...  
1,668 × 2,154; 302 KB



Snímek 134.JPEG  
4,000 × 3,000;  
2.02 MB



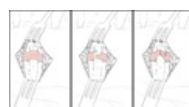
Spindle cell lipo...  
442 × 442; 196 KB



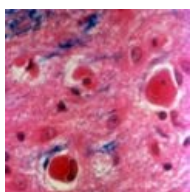
Spinocel.jícen2.JPG  
646 × 528; 281 KB



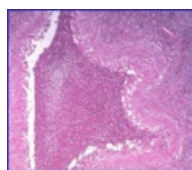
Spinocel.jícen.JPG...  
647 × 530; 243 KB



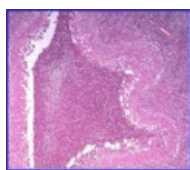
Stenozující tendo...  
1,500 × 823; 169 KB



Subakutní skeróz...  
300 × 300; 36 KB



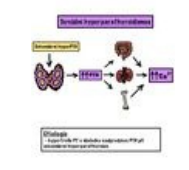
Suppurative stell...  
354 × 311; 45 KB



Suppurative stell...  
359 × 315; 45 KB



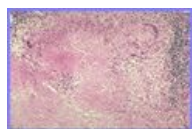
Tabár I-V.png  
5,627 × 1,757; 816 KB



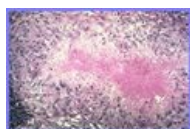
Terciární hyperp...  
1,668 × 2,154; 328 KB



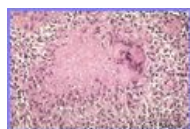
Tn sarcoid gross l...  
100 × 66; 2 KB



Tuberkulóza - Gr...  
310 × 210; 29 KB



Tuberkulóza - ne...  
310 × 210; 30 KB



Tuberkulóza - ne...  
310 × 210; 33 KB



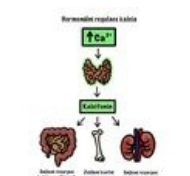
Tuberkulža 003.jpg  
600 × 476; 64 KB



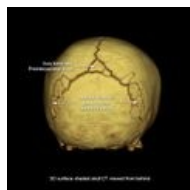
Tumor sigma.JPG  
348 × 295; 20 KB



Třešňová skvrna....  
1,991 × 2,072; 443 KB



Up regulace Ca.j...  
1,668 × 2,154; 330 KB



WormianBones.jpg  
820 × 820; 65 KB